

Appendix – General Field Rules

Safe Pilot Procedures – At All Fields, At All Times, by All Members

- 1. All Cloud Jockeys are expected to operate their model aircraft in accordance with the AMA Safety Code and the “See and Avoid guidance” issued by the AMA.**
- 2. Each member is responsible for safe operation of their model aircraft.**
- 3. Each member is responsible for ensuring that spectators and visitors are safe and out of the pit/flight areas**
- 4. You don’t need to be asked to spot for a pilot or to help a member that could need help. Safety begins by looking out for each other.**
- 5. The current version of the AMA Safety code and “See and Avoid Guidance” are posted at each field and are available thru the AMA website**

Safe Pilot Procedures - McAlister Park North Field

1. Always takeoff into the wind. This determines flight direction. Pilots already in the air control the landing pattern. Ask before you take off.
2. Always stand behind safety fence when flying. You are only allowed on the runway for takeoff.
3. Always check with the pilots(s) in the air for permission to use the runway. If the pilot wishes to fly alone - please limit flights to 10 minutes when there are other pilots waiting.
4. Always stand close to pilots so communication is possible. Use spotter when available.
5. Never fly behind the safety fence or over people.
6. Never Taxi in the Pit Area.
7. On Landing approaches from the south – you may make an slight overfly to the west as long as you don't fly over the Wabash Heritage trail and the River and are in front of the safety fence when over the short grass area of the field. See Figure 1 for details.
8. Under no circumstances will you fly behind the safety fence or the parking barriers while in the low grass area
9. Mcallister Park has a maximum altitude for model operation of 400 feet at all times. You can use reasonable judgement in estimating your altitude but ask for assistance if you are unsure.
10. An emergency landing (dead stick, equipment problems, etc.) has the right of way over all others. (Similarly, any pilot who calls for a landing commands right of way.)
11. The Safety coordinator has final say on any items dealing with safety and the published field rules.
12. Repeated offenses will result in membership forfeiture and removal of flying privileges at all Cloud Jockey fields
13. Attached is Figure 1 describing the permitted overfly and “no Fly Zones” at McAlister Park.

Safe Pilot Procedures – Timberhouse estates -South Field

1. Always takeoff into the wind. This determines flight direction. Pilots already in the air control the landing pattern. Ask before you take off.
2. Always stand behind line of runway lights. You are only allowed on the runway for takeoff.
3. Always check with the pilots(s) in the air for permission to use the runway. If the pilot wishes to fly alone - please limit flights to 10 minutes when there are other pilots waiting.
4. Always stand close to pilots so communication is possible. Use spotter when available.
5. For Powered Flight - always fly north of the runway lights and. east of the Pit/Parking Area (See Figure 2)
6. For Gliders - While your motor is off we have a 360-degree flying site as specified by the AMA. You are not allowed to fly over the Pit/Parking area or Launch/Power while over the houses on the Southwest corner of Timberhouse (See Figure 3)
7. Never Taxi in the Pit Area.
8. Full Scale Flight has priority over any model flight. Use a spotter and if a Full-scale airplane is either taking off or in a landing approach, yield right of way and land immediately
9. An emergency landing (dead stick, equipment problems, etc.) has the right of way over all others. (Similarly, any pilot who calls for a landing commands right of way.)
10. The Safety coordinator has final say on any items dealing with safety and the published field rules.
11. Repeated offenses will result in membership forfeiture and removal of flying privileges at all Cloud Jockey fields



Figure 1 - North Field (McAlister Park)



Figure 2 – Power Layout - South Field (Timberhouse Estates)

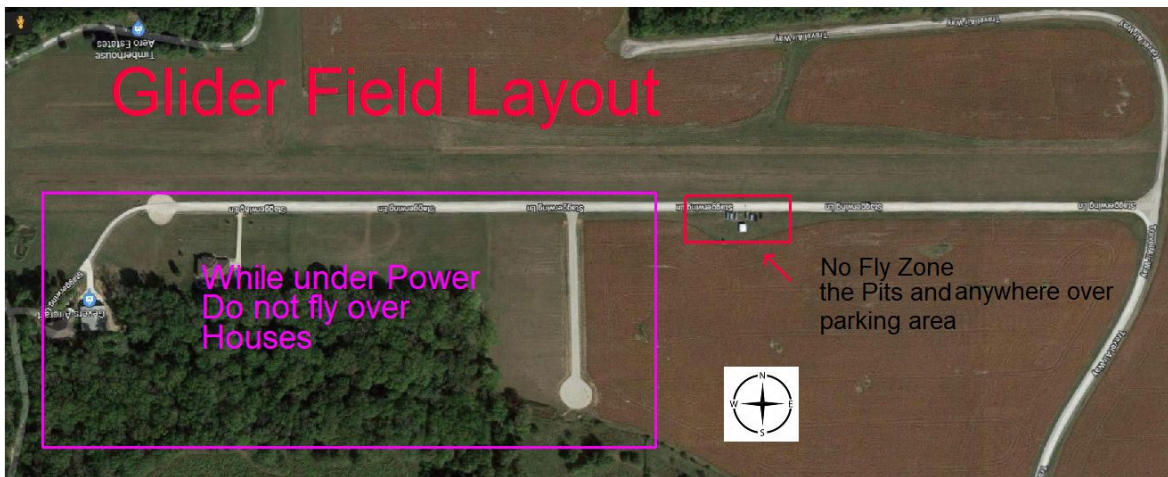


Figure 3 – Glider Layout South Field (Timberhouse Estates)